

---

# WHITEBOXDESIGN

## STUDIO

---

*Thank you for purchasing our product. If you have any questions or comments, please feel free to send us a message to [info@natsuminishizumi.com](mailto:info@natsuminishizumi.com)*

### FOODIE POSTCARD FLYERS

#### FEATURES:

- 4 layered digital PSD template files ( 2 x front and back PSD files )
- Size: 5"x 7" / Final file size with 0.25" bleed (5.5"x 7.5")
- Highly organized layers
- Free fonts used. Links to the fonts are included in your download
- Free stock images used. Links to the photos are included in your download
- Simple tutorial Included
- Fully customizable
- CMYK 300 DPI print ready files

#### PLEASE NOTE:

- **Photographs and mock-ups are NOT included in final product.**
- Basic knowledge of Photoshop needed in order to edit the templates.
- Requires Adobe Photoshop CS5 or newer version. If you don't have photoshop, you can download a free 7 day trial of Photoshop CC here: <https://www.adobe.com/creativecloud/desktop-app.html>

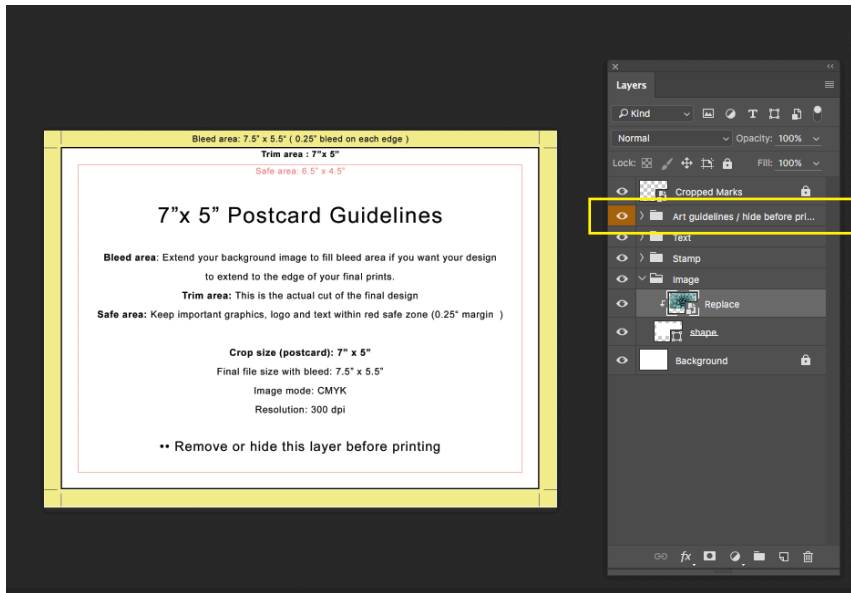
**Please download and install the fonts before opening the file.**

FONTS USED ( Free for commercial use ) :

<https://www.fontsquirrel.com/fonts/cormorant>

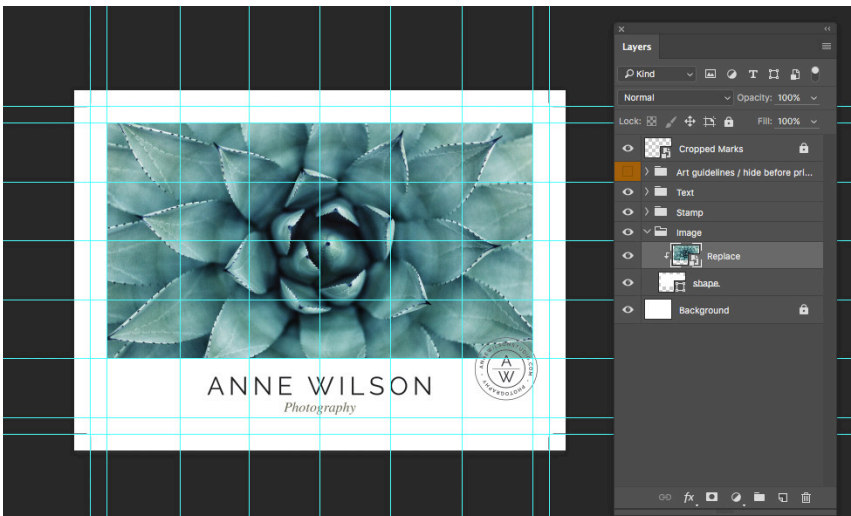
<https://www.fontsquirrel.com/fonts/montserrat>

## POSTCARD GUIDELINES



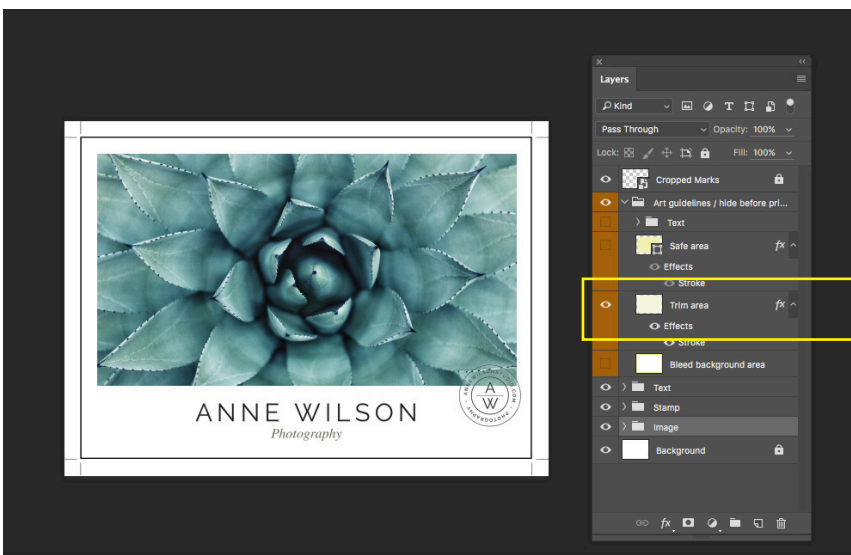
How to hide/show the art guidelines:

Clicking the eye icon next to **Art Guidelines** folder on the Layers panel will hide/show the art guidelines.



How to show grids and guides :

Go to View > Show > Guides

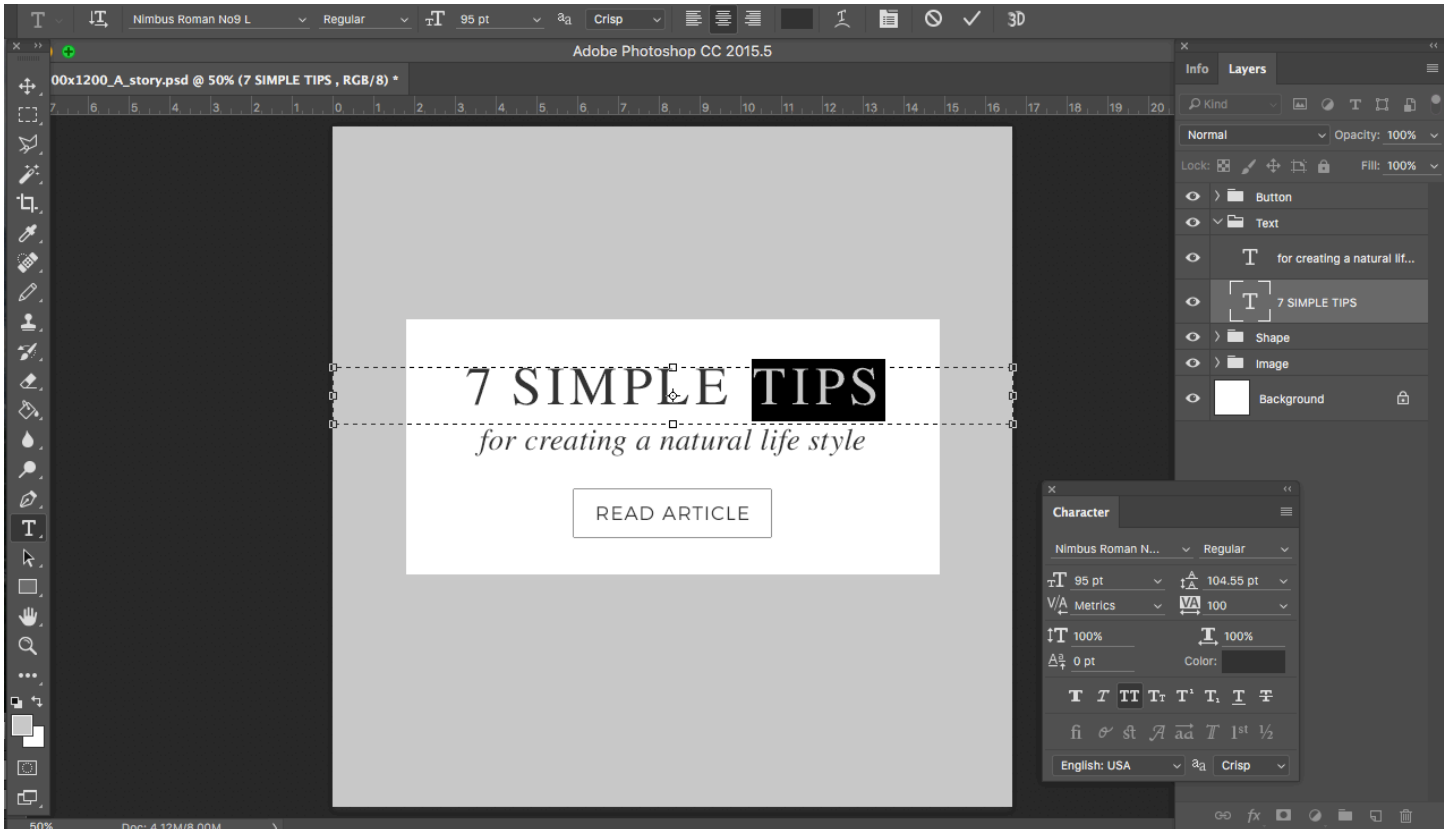


How to show only trim line:

Clicking the eye icon next to **Trim area** layer on the Layers panel and hide the rest of the layers of Art Guidelines.

## INSTRUCTIONS

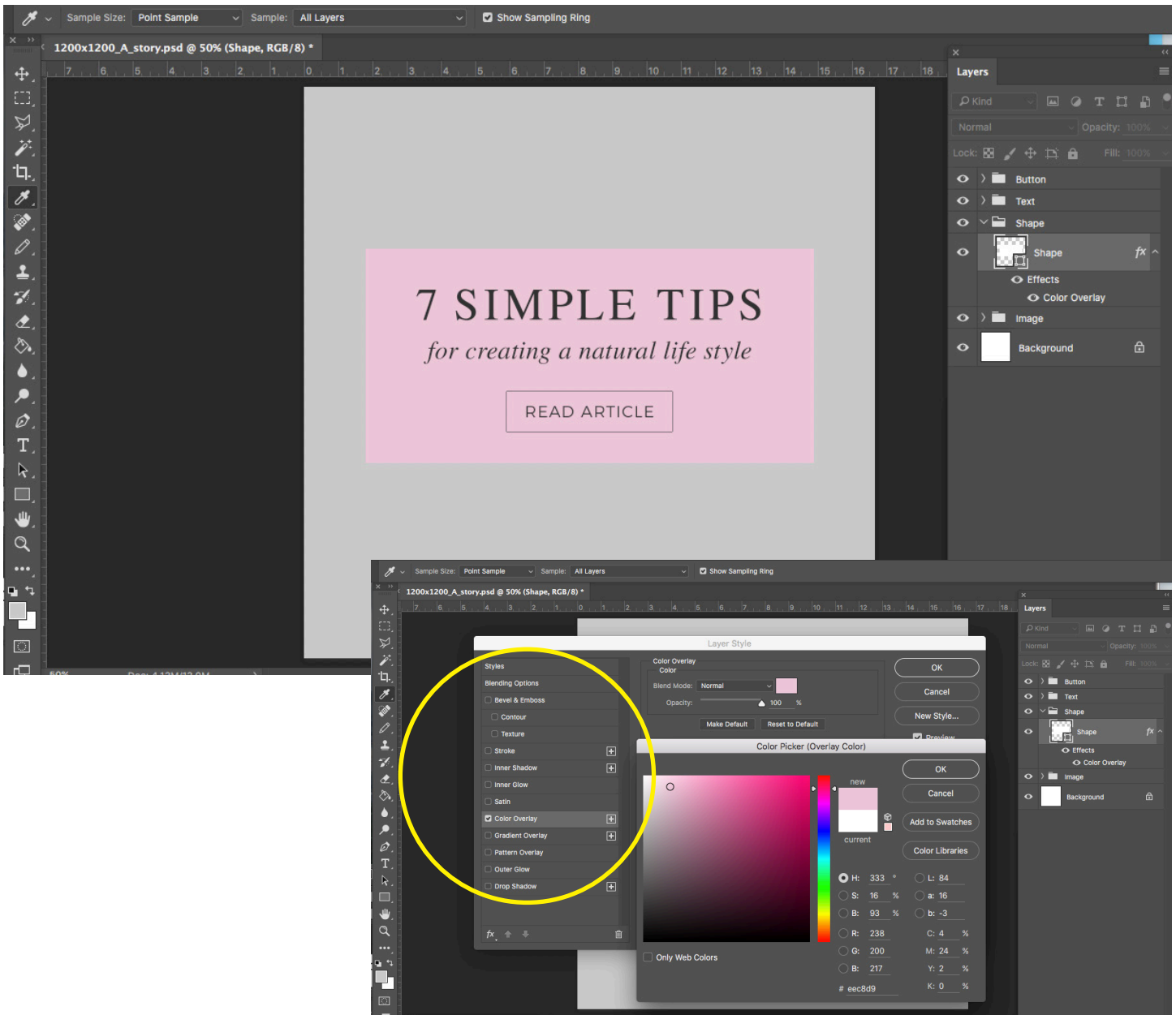
### HOW TO EDIT TEXT



\*\* Please download and install the fonts before opening the file.

- Select the type tool (**T**)
- Select the type layer in the Layers panel, or click in the text flow to automatically select a type layer
- Make any changes to your text

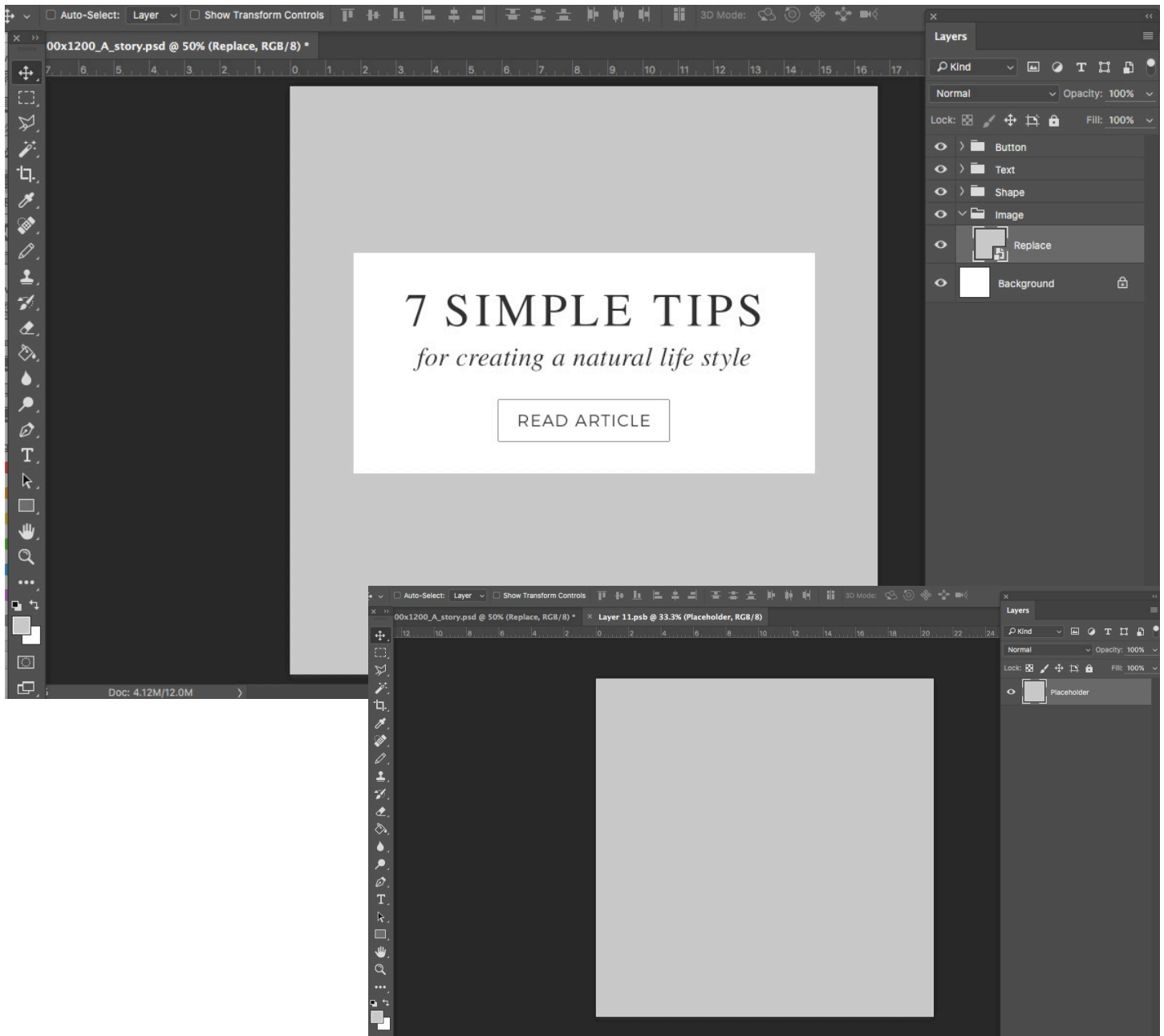
## HOW TO EDIT COLOR



- Double click the effect/color overlay on layer palette or go to layer > layer style > color overlay
- Click the small color box near the top of the Layer Style window. Photoshop's Color Picker opens
- Select the color you want to use
- You can also add drop shadow and stroke on the Layer Style

## INSTRUCTIONS

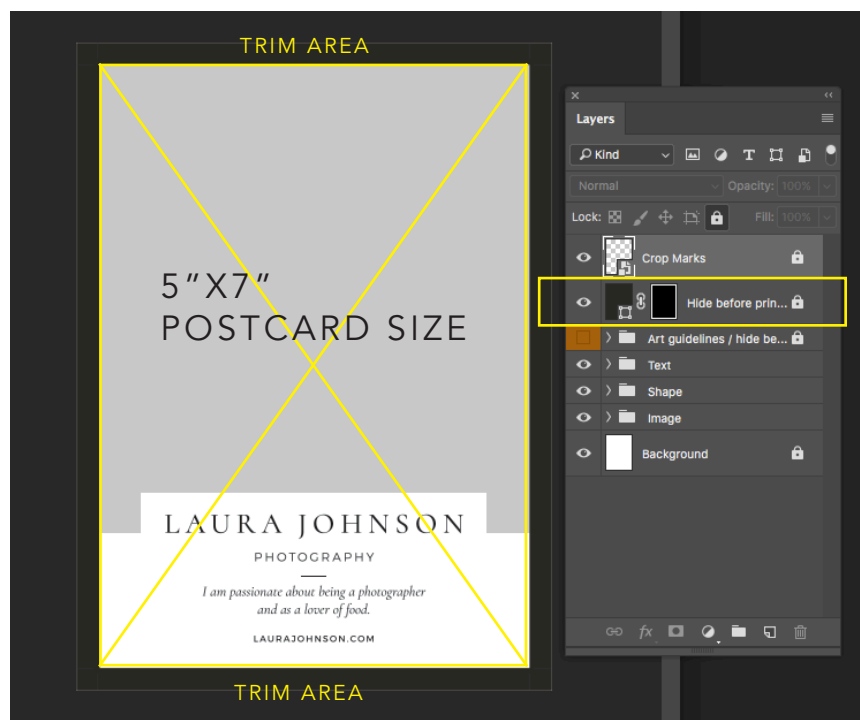
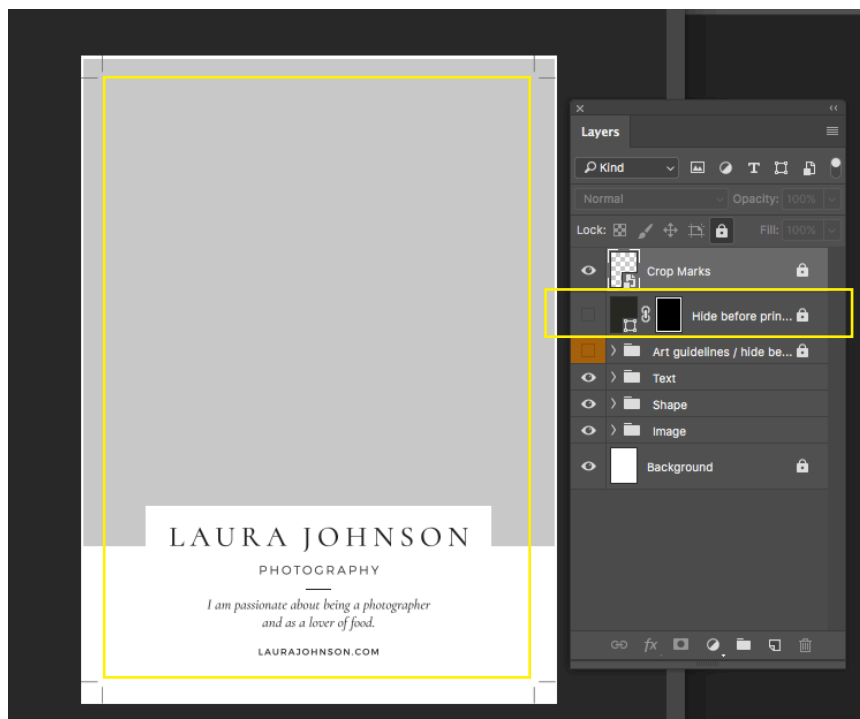
### HOW TO REPLACE IMAGE



- Double click the image "replace" layer on layer palette or go to Layer > Smart Objects > Edit Contents
- Locate a new file. Go to File > Place Linked to place your image
- Go to File > Save or hold down command and press S to save
- An original file is updated with your image
- Adjust the placement of your image

## INSTRUCTIONS

### HOW TO HIDE CROP MARKS



Click the eye icon to hide crop marks, so you can see where trim area is.

Please make sure to hide or delete this layer before sending a file to a printer.

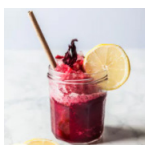
## RESOURCES FOR FREE STOCK PHOTOS

### PHOTOS USED:

All photos are licensed under Creative Commons Zero. They are free for commercial use. Please go to <https://unsplash.com/license> for terms and conditions.



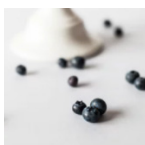
<https://unsplash.com/photos/w6ftFbPCs9I>



<https://unsplash.com/photos/HDjExSGuWUw>



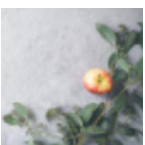
<https://unsplash.com/photos/xdGszqil4GI>



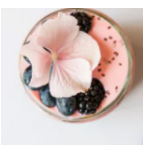
<https://unsplash.com/photos/O9a36Zah534>



<https://unsplash.com/photos/soCYO4mMVWk>



<https://unsplash.com/photos/wMzx2nBdeng>



<https://unsplash.com/photos/sBDJADrnsbY>